

OPINION

Sporulation, bacterial cell envelopes and the origin of life

Elitza I. Tocheva, Davi R. Ortega and Grant J. Jensen

Abstract | Electron cryotomography (ECT) enables the 3D reconstruction of intact cells in a near-native state. Images produced by ECT have led to the proposal that an ancient sporulation-like event gave rise to the second membrane in diderm bacteria. Tomograms of sporulating monoderm and diderm bacterial cells show how sporulation can lead to the generation of diderm cells. Tomograms of Gram-negative and Gram-positive cell walls and purified sacculi suggest that they are more closely related than previously thought and support the hypothesis that they share a common origin. Mapping the distribution of cell envelope architectures onto a recent phylogenetic tree of life indicates that the diderm cell plan, and therefore the sporulation-like event that gave rise to it, must be very ancient. One explanation for this model is that during the cataclysmic transitions of the early Earth, cellular evolution may have gone through a bottleneck in which only spores survived, which implies that the last bacterial common ancestor was a spore.

Historically, bacteria were classified by their ability to retain the Gram stain¹. Following the development of electron microscopy, the actual structure of the bacterial cell envelope became apparent. Gram-positive bacteria were seen to be monoderms (having a single membrane) with a relatively thick layer of peptidoglycan. Gram-negative bacteria were seen to be diderms (having two membranes) with a thin layer of peptidoglycan between the two membranes. Typical Gram-positive and Gram-negative cell envelope architectures are exhibited by the members of the Firmicutes and Proteobacteria phyla and are represented by the model organisms *Bacillus subtilis* and *Escherichia coli*, respectively^{2,3}.

The cytoplasmic membrane of all cells (the innermost membrane in the case of diderm bacteria) contains α -helical integral membrane proteins and sustains a chemical gradient, which usually involves protons and is used to produce ATP. The structure and function of the outer membrane in diderm bacteria are very different. Whereas the inner membrane is a symmetrical lipid bilayer, the outer membrane of typical Gram-negative bacteria is asymmetric, with the outer leaflet being composed primarily of

lipopolysaccharide (LPS). Outer membranes are also rich in outer-membrane proteins (OMPs; mostly β -barrel proteins) that allow the free diffusion of small molecules into and out of the periplasm^{2,4}. Interesting exceptions to the typical Gram-positive and Gram-negative envelope architectures exist. For example, members of the class Mollicutes (in the Tenericutes phylum) lack peptidoglycan and members of the Corynebacterineae, a suborder of the Actinobacteria phylum that includes mycobacteria, have an unusual outer membrane that is rich in mycolic acids.

It is unclear how the different architectures of monoderm and diderm bacterial envelopes have evolved. However, recent insights provided by electron cryotomography (ECT) suggest that the cell walls of Gram-negative and Gram-positive bacteria are more closely related than previously assumed and that sporulation can lead to the generation of diderm cells from a monoderm progenitor. In this Opinion article, we review the evidence that supports this hypothesis and outline a possible scenario that puts sporulation at the onset of evolution of all bacteria.

Biogenesis through sporulation

Various theories exist about the origin of life on Earth. Some theories imagine larger and larger molecules replicating in rich organic pools, with lipid vesicles washing out of cavities in rocks to enclose primordial cells⁵. Assuming that the earliest primordial cells were monoderm^{3,6–9}, the acquisition of an outer membrane must have been a major evolutionary step. Prior to the characterization of sporulation in diderm cells in 2011 (REF. 10), the most prominent, but highly criticized^{11,12}, hypothesis for how outer membranes evolved was based on the distribution of protein families and proposed that a symbiosis between an ancient actinobacterium and an ancient clostridium produced the last common ancestor of all diderms^{11,13}. Based on conserved protein inserts, Gupta proposed that diderms that lack LPS preceded the formation of diderms that contain LPS¹². Although the mechanism by which the second membrane developed was not addressed, Gupta argued that antibiotic selection pressure was the main evolutionary driver.

We propose that the outer membrane probably first arose through the formation of endospores, a common process that is executed by many species in the Firmicutes phylum. The formation of endospores begins with genome segregation and asymmetric cell division. Next, in a process that is similar to phagocytosis in eukaryotic cells, the larger compartment (mother cell) engulfs the smaller compartment (future spore). Several protective layers are formed around the immature spore and then lysis of the mother cell releases a mature spore into the environment. Notably, spores have a complete copy of the genomic DNA. Later, germination returns the dormant spore to a vegetative state^{14,15}.

Although the well-studied model endospore-forming species (*Bacilli* and *Clostridia* classes) are all monoderms, we studied *Acetoneema longum*, a member of a lesser-known class of Firmicutes, the Negativicutes^{16,17}, that forms endospores but is diderm^{10,18}. The class Negativicutes contains more than 30 genera in two families, the Veillonellaceae and Acidaminococcaceae, and outer membrane and LPS biosynthesis genes are readily detectable in the genomes

of these bacteria^{2,19}. Biochemical characterization of the outer membrane also revealed that *A. longum* contains LPS similarly to model diderms²⁰. Homology between many OMPs of *A. longum* and their counterparts in proteobacteria and other diderm species suggested that these proteins share an ancient common heritage (rather than being the result of convergent evolution)¹⁰. Moreover, phylogenetic analysis of several *omp85* and *omp87* family genes, which are involved in the insertion and assembly of OMPs, revealed a close relationship between mitochondria and α -proteobacteria, but no close relationship between *A. longum* and any other species in diderm phyla, which argues against recent horizontal gene transfer¹⁰. Therefore, *A. longum* and other members of the Veillonellaceae are candidate 'missing links' between monoderm and diderm bacteria. They have characteristics of both monoderms and diderms: an outer membrane and the ability to form endospores.

Mechanistic clues about how the formation of endospores may have given rise to bacterial outer membranes came from comparing images of sporulating cells of *B. subtilis* (monoderm) and *A. longum* (diderm)^{10,21} (FIG. 1). Cells from both species were imaged with ECT, which provides 3D reconstructions of intact cells to 'macromolecular' (3–4 nm) resolution²². Images of vegetative, sporulating and germinating cells revealed that both monoderm (*B. subtilis*; FIG. 1, left panels) and diderm (*A. longum*; FIG. 1, right panels) bacteria produced spores that were surrounded by two membranes. Furthermore, in both cases, the two membranes originated from the inner (or cytoplasmic) membrane of the mother cell. At some time between mid-to-late spore development and germination, *B. subtilis* loses its outer spore membrane to become a monoderm, 'Gram-positive' vegetative cell, whereas *A. longum* retains both spore membranes and the outer spore membrane remains and is remodelled to an outer membrane. Therefore, the formation of endospores provides a novel hypothesis for how the bacterial outer membrane could have evolved: a primordial monoderm cell may have first developed the ability to form endospores, and then this process could have given rise to diderm vegetative cells^{10,23,24} (FIG. 2).

Peptidoglycan and sporulation

Further support for this hypothesis came from imaging the cell walls of both Gram-positive and Gram-negative

bacteria. Typical Gram-negative peptidoglycan is a single-layer polymer that is composed of long glycan strands that are formed by repeating units of *N*-acetyl glucosamine–*N*-acetyl muramic acid crosslinked with peptide bonds²⁵. Peptidoglycan is synthesized by transglycosylases and transpeptidases and other proteins that are influenced by cytoskeletal filaments²⁶. The architecture of Gram-negative peptidoglycan was initially unclear^{27–29}. However, direct visualization of the cell wall architecture of *E. coli* and *Caulobacter crescentus* by ECT revealed that the glycan strands of Gram-negative peptidoglycan run along the cell surface perpendicular to the long axis of the cell and parallel to the cell surface (in a 'layered', or 'circumferential' model)³⁰.

Gram-positive peptidoglycan is thicker (~40 nm), but is closely related to Gram-negative peptidoglycan in two ways. First, the basic chemical structure of peptidoglycan is very similar among Gram-positive and Gram-negative bacteria — notable differences are mostly related to modifications in the composition of peptides, the extent of peptide crosslinks and the length of the peptidoglycan chains³¹. In fact, members of the Proteobacteria and Firmicutes phyla, in particular, share the same chemotype of peptidoglycan (A1 γ), with a *meso*-diaminopimelic acid (*meso*-A₂pm) residue at position 3 of the peptide and a direct crosslink to a D-alanine at position 4 of the neighbouring peptide^{24,32}. Second, many biochemical and genetic studies have shown homology between the enzymes that are responsible for synthesizing peptidoglycan in Gram-negative and Gram-positive bacteria^{33–35}; therefore, the cell walls that they build are likely to be similar.

Various models for the architecture of Gram-positive peptidoglycan have been proposed including circumferential, scaffold and coiled cable models^{28,36–39}. Unfortunately, direct visualization of the architecture of Gram-positive peptidoglycan by ECT was not possible owing to its thickness and rigidity⁴⁰. However, ECT imaging of sheared purified *B. subtilis* sacculi and coarse-grain molecular dynamics simulations supported the circumferential model⁴⁰. Thus, the basic architecture of both Gram-negative and Gram-positive cell walls is similar.

Interestingly, the similarities in peptidoglycan architecture are supported by the observation that thick peptidoglycan and thin peptidoglycan

can be interconverted²¹. At the onset of sporulation in the Gram-positive monoderm bacterium *B. subtilis*, thick peptidoglycan (~40 nm) is present between the two septal membranes (FIG. 3; top). Prior to engulfment, this thick peptidoglycan layer is remodelled into a thin layer that resembles Gram-negative peptidoglycan. The thin layer is extended by the synthesis of new peptidoglycan at the leading edges of engulfing membranes as they progress around the immature spore⁴¹. At the end of engulfment, a thin layer of peptidoglycan is found between the two spore membranes and probably acts as a foundation for the synthesis of the spore cortex (thick protective layers of glycan strands that are crosslinked by peptide bonds). Similar transitions of peptidoglycan thickness were observed in *A. longum* (FIG. 3; bottom). Thus, both *A. longum* and *B. subtilis* transform a thick layer of peptidoglycan into a thin, Gram-negative-like layer that eventually surrounds the immature spore during engulfment, and then expand this thin layer into a thick cortex during spore maturation. Both Gram-negative and Gram-positive bacteria can synthesize both thin and thick peptidoglycan and can gradually remodel one into the other, which strongly supports the concept that the cell walls have the same circumferential architecture and differ mainly in the number of layers that are present²¹. As the synthesis of peptidoglycan probably drives the engulfing membranes during sporulation^{10,41}, the evolution of peptidoglycan probably preceded the evolution of sporulation. Appreciation of the diversity of cell wall thicknesses across the bacterial world is growing⁴². For example, the existence of medium-thick peptidoglycan in cyanobacteria⁴³ and deinococci⁴⁴ further supports the model that the basic peptidoglycan architecture is similar in Gram-negative and Gram-positive bacteria and just varies in thickness.

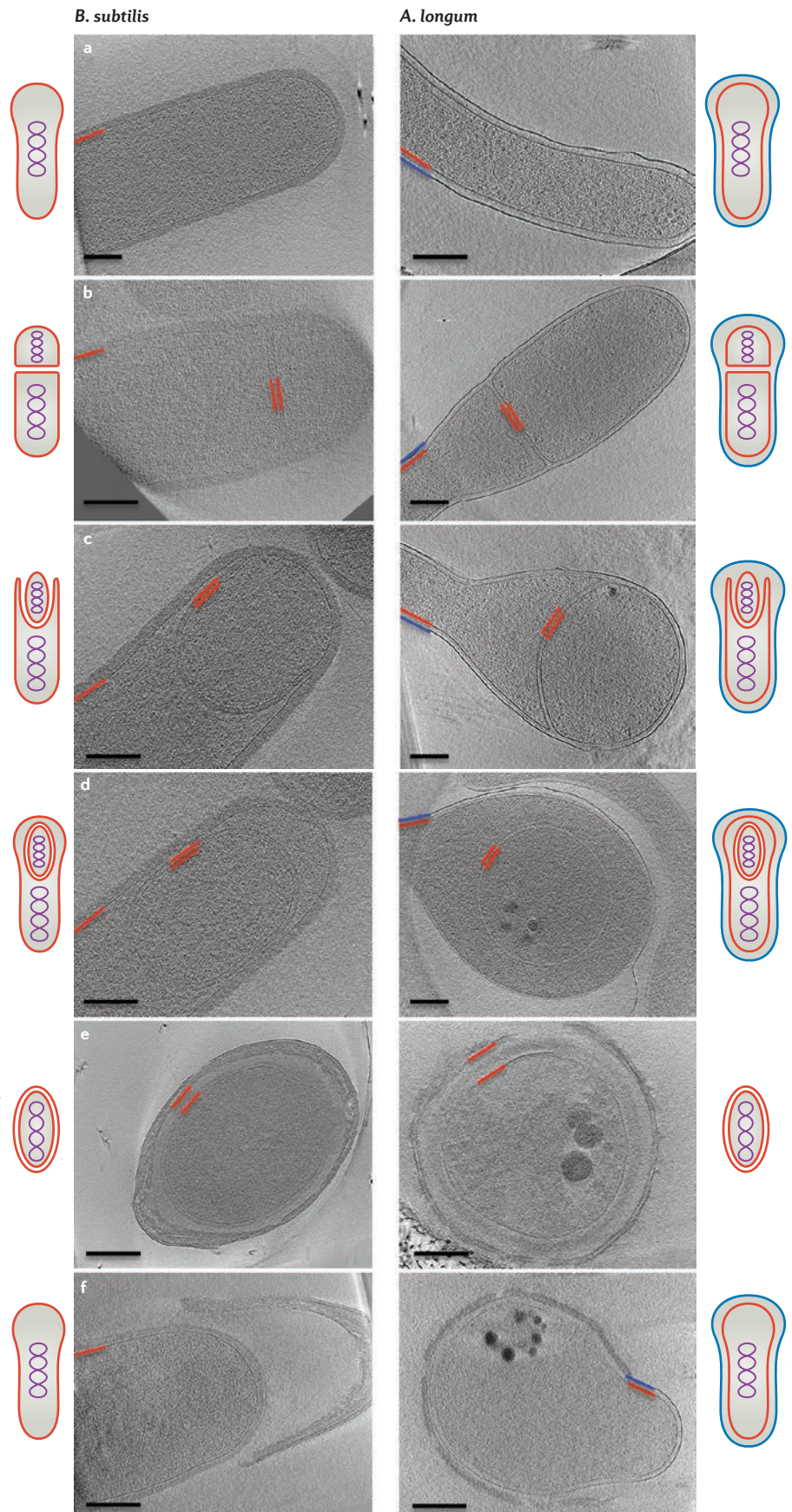
Because Gram-negative and Gram-positive cell walls have the same basic architecture (circumferential glycan strands) and can be interconverted during the sporulation cycle, we should not think of these two major divisions of bacteria as completely separate branches of the bacterial phylogenetic tree, but instead as potentially closely related or even phylogenetically intermixed (as they are in the Firmicutes phylum)¹⁷. This supports the hypothesis that the sporulation process in a primordial cell may have led to both the Gram-positive and Gram-negative cell plans.

Evolutionary implications

As the number of sequenced genomes has increased, more and more sophisticated phylogenetic analyses of bacteria have been possible^{45–48}. Although this has made the relationships between phyla increasingly clear, unfortunately there is no agreement on how to root the tree of life. Therefore, it remains a mystery as to which modern species most closely resembles the last universal common ancestor⁴⁹. To explore the evolutionary implications of our hypothesis we consider three different roots for the tree of life: between Archaea and Bacteria^{50,51} (FIG. 4a; although historically most favoured, it is not supported by recent findings)⁵²; at the Chloroflexi phylum^{53,54} (FIG. 4b); and at the Firmicutes phylum^{45,55} (FIG. 4c; the last two roots are suggested by current methodologies in systematics). In each case we use a recently published and comprehensive tree of life⁴⁶ to assert the relationships between the established phyla for which the envelope architecture is known. By simply rooting the tree of life in different places, we map the gains and losses for the ability to sporulate and the presence of an outer membrane in a way that minimizes the number of evolutionary events required (FIG. 4).

We begin with the first scenario (that the root of the tree of life lies between the three major kingdoms), as suggested by Gogarten and Woese^{50,51}. Mapping the basic cell envelope structures of different species to the right of the corresponding tree (FIG. 4a) presents an interesting surprise: the monoderm phyla (Firmicutes, Tenericutes, Actinobacteria and Chloroflexi) are surrounded by diderm phyla. In addition, the Firmicutes and Actinobacteria phyla

Figure 1 | Sporulation in Gram-positive and Gram-negative bacteria. Overview of bacterial sporulation in *Bacillus subtilis* (left) and *Acetonebma longum* (right) by electron cryotomography (ECT). Each panel represents a tomographic slice through a bacterial cell at a different stage of sporulation. Part **a** shows vegetative cells, part **b** shows the formation of the septum, part **c** shows engulfment, part **d** shows forespores, part **e** shows mature spores and part **f** shows germinating cells. The inner membrane and cytoplasmic membrane are depicted in red and the outer membrane of *A. longum* is depicted in blue. Schematic representations of all sporulation stages are shown next to the tomographic slices. Scale bar 200 nm. Images in the left panels of parts **d–f** are adapted with permission from REF. 21, Wiley. Images in the right panels of parts **a, b, d, e** and **f** are adapted with permission from REF. 10, Elsevier.



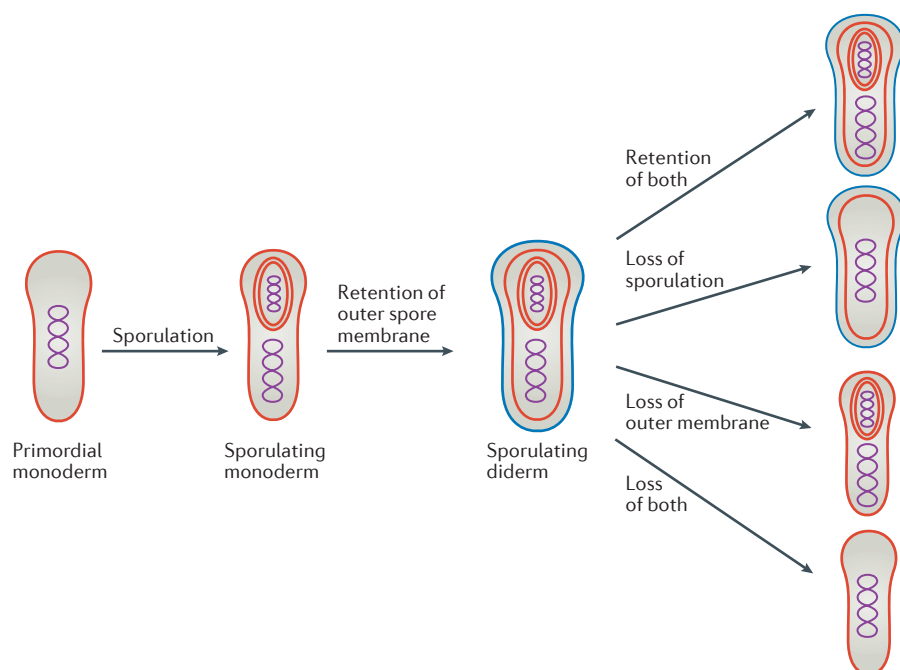


Figure 2 | Model for how the outer membrane arose as a byproduct of sporulation and how losses then led to the diversity of modern bacterial cell plans. At some point during early evolution, the cell division and nutrient-uptake processes of a primordial cell were combined into a sporulation-like process. Retention of the second spore membrane led to sporulating diderm species. Losses of the outer membrane and/or the ability to sporulate in various lineages can explain the distribution of cell envelope architectures that is observed in modern bacteria. An alternative hypothesis (not shown) is that some monoderms evolved directly from a monoderm last common ancestor.

comprise both monoderm and diderm species. Possible explanations for this observation are that the diderm cell plan evolved several times independently or was horizontally transferred. However, as OMPs are homologous among all diderm phyla and the assembly, structure and function of the outer membrane depend on hundreds of genes, we propose that the last bacterial common ancestor was a diderm. The diversity of known phyla could then be explained by losses of the outer membrane and/or sporulation properties: members of diderm phyla, such as Proteobacteria, Deinococcus–Thermus, Thermotogae, Cyanobacteria, Spirochaetes, Chlorobi–Bacteroidetes and Planctomycetes–Verrucomicrobia–Chlamydiae (PVC superphylum), lost their ability to sporulate but retained their outer membrane, which explains why they all share common β -barrel OMPs^{2,10}. In the Firmicutes phylum, most bacilli and clostridia (such as *B. subtilis* and *Clostridium difficile*) retained their ability to form endospores but discarded their outer membrane in the vegetative state, perhaps for reasons of increased efficiency. Other clostridia, such as *A. longum*, retained both properties, whereas others species such as *Veillonella parvula* lost the ability to

sporulate but retained an outer membrane. Members of the Chloroflexi and most members of the Firmicutes (such as *Listeria monocytogenes*) lost both the ability to sporulate and their outer membrane, as did members of the Tenericutes (*Mycoplasma* spp.), which further discarded their peptidoglycan (as in FIG. 2).

The Actinobacteria phylum presents a particularly interesting case. Some actinobacteria such as *Streptomyces coelicolor* are monoderm. Other actinobacteria such as mycobacteria are diderm, but have a unique outer membrane that is linked to a thin layer of peptidoglycan by a network of arabinogalactan^{56,57}. The lipid composition of the outer membrane is rich in mycolic acids, which is a notable difference from the outer membrane of members of the Proteobacteria phylum. Although different lipids comprise the outer membrane in mycobacteria and no *omp85* or *omp87* genes (which encode homologues of the conserved outer-membrane protein BamA) have been identified, a mycobacterial OmpA homologue has been found⁵⁸, and bioinformatics and experimental approaches have identified over 100 putative OMPs⁵⁹ that have β -barrel structure^{60–62}. Again, this suggests that members of the Actinobacteria

phylum descend from an ancient ancestor with an outer membrane and established OMPs but that the outer-membrane lipids in the mycobacterial branch of the phylum were exchanged for mycolic acids and there were accompanying adaptations. Alternatively, of course, the mycolic envelope is different enough that it may have evolved independently and received conserved OMPs through horizontal gene transfer. In either case, if the tree is rooted between kingdoms, the distribution of diderms throughout the rest of the tree suggests that the last bacterial common ancestor was a sporulating diderm (FIG. 4a).

The second evolutionary scenario we will consider arises from the proposals of Cavalier-Smith and Valas and Bourne^{40,41,63} that modern members of the Chloroflexi phylum are most closely related to the root of the tree of life (FIG. 4b). In this scenario, the Chloroflexi may have never been diderm⁶⁴, but for similar reasoning as above (diderms are not monophyletic in this tree, and it is unlikely that the diderm cell plan evolved more than once or was laterally transferred), we hypothesize that a very early sporulation process led to a diderm that is the last common ancestor of all other cells.

A third scenario (FIG. 4c) is that modern members of the Firmicutes phylum are closest to the root of the tree of life (Lake and Bork^{45,55}). Although the Firmicutes phylum is, by sequence analysis, monophyletic (all branches are clearly more related to each other than any other bacterial branch), five diverse cell forms are seen within the phylum (monoderm sporulating, monoderm non-sporulating, diderm sporulating, diderm non-sporulating and monoderm non-sporulating without a cell wall). If the monoderm members of the Firmicutes were directly related to a monoderm last bacterial common ancestor, but the diderm members of the Firmicutes descended from a different branch that also gave rise to all other diderm phyla, these two parts of the Firmicutes phylum would not cluster together. Thus, if the diderm plan evolved only once and was not later horizontally transferred, it must have preceded the branching of the Firmicutes phylum, which leads to the conclusion that the last universal common ancestor was most likely a sporulating diderm. The diversity seen within the Firmicutes phylum could then be explained by losses, again as in FIG. 2.

Other theories have been put forward over the years. For example, without proposing a mechanism whereby the outer

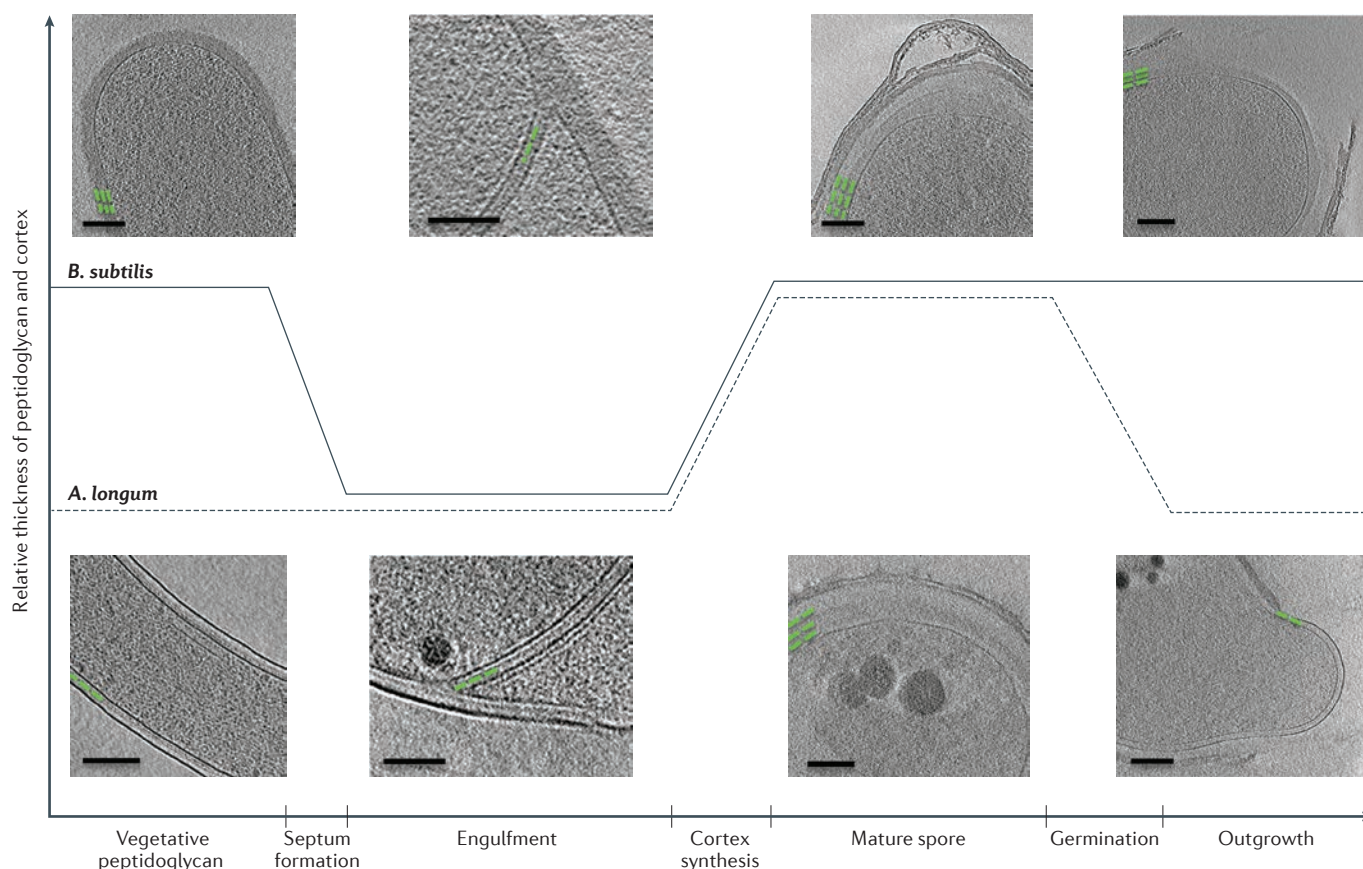


Figure 3 | Peptidoglycan remodelling during sporulation. Peptidoglycan and cortex remodelling during sporulation in *Bacillus subtilis* and *Acetonebma longum* show that both Gram-positive and Gram-negative bacterial cells can synthesize thick and thin peptidoglycan and can remodel

one into the other, which supports the notion that all bacterial cell walls have the same basic architecture that is inherited from a common ancestor. Green lines represent the placement and thickness of peptidoglycan. Scale bar 100 nm. Adapted with permission from REF. 21, Wiley.

membrane first arose, Gupta suggested that current monoderm phyla never went through a diderm stage — the Chloroflexi (monoderms) and Deinococcus–Thermus (diderms that lack LPS) phyla branched before all of the traditional LPS-containing Gram-negative phyla, and Negativicutes, Fusobacteria, Synergistetes and Elusimicrobia obtained their outer membranes by lateral gene transfer or independent evolution¹². However, phylogenetic analysis suggests that the OMPs and LPS in *A. longum* are ancient and are therefore not likely the result of recent gene transfer¹⁰. The sequence homology of these features with those in traditional Gram-negative bacteria such as *E. coli* further suggests a common ancestor and argues against convergent evolution. Finally, the Chloroflexi (monoderm) and Deinococcus–Thermus phyla do not cluster together in the most recent phylogenetic trees⁴⁶, but rather are separated by LPS-containing diderms, which raises further problems with the theory of early

branching of monoderm phyla without a diderm stage. Other theories also depend on the notion that the outer membrane could have evolved twice — for example, once leading to the majority of known diderms and once leading to the formation of the mycolate membrane⁶⁵. Considering the need for hundreds of genes to encode all of the components of a membrane and their correct assembly, a single ancient origin seems more likely⁶⁶.

Future work on cell envelope structure, phylogenetic relationships between established phyla, and the discovery and characterization of new phyla will enable further evaluation of these hypotheses^{67,68}. In fact, a substantially expanded tree of life was recently published⁶⁹. Although it highlights the rich diversity of life that remains to be discovered and characterized, the phylogenetic analysis was not optimized to discern ancient relationships of well-characterized phyla as was the analysis by Raymann *et al.*⁴⁶; therefore, it remains more appropriate for us to use the tree

by Raymann *et al.* for the construction of rooted phylogenetic trees that represent relationships between bacterial phyla (FIG. 4). However, both trees show that neither the monoderm nor diderm species are monophyletic. Thus, if the diderm cell plan evolved only once, and was not passed by horizontal transfer across phyla, the last common ancestor of all branches with diderm members must have been a diderm, and the monoderm members of those same branches are best explained by the loss of the ancestral outer membrane. The future discovery of even more new phyla will not change that — it will only add new branches.

Conclusions

In summary, we have presented the hypothesis that the diderm cell plan arose from a sporulation-like event. We have reviewed the images of sporulating monoderm and diderm species and Gram-negative and Gram-positive cell walls that support the hypothesis. We have

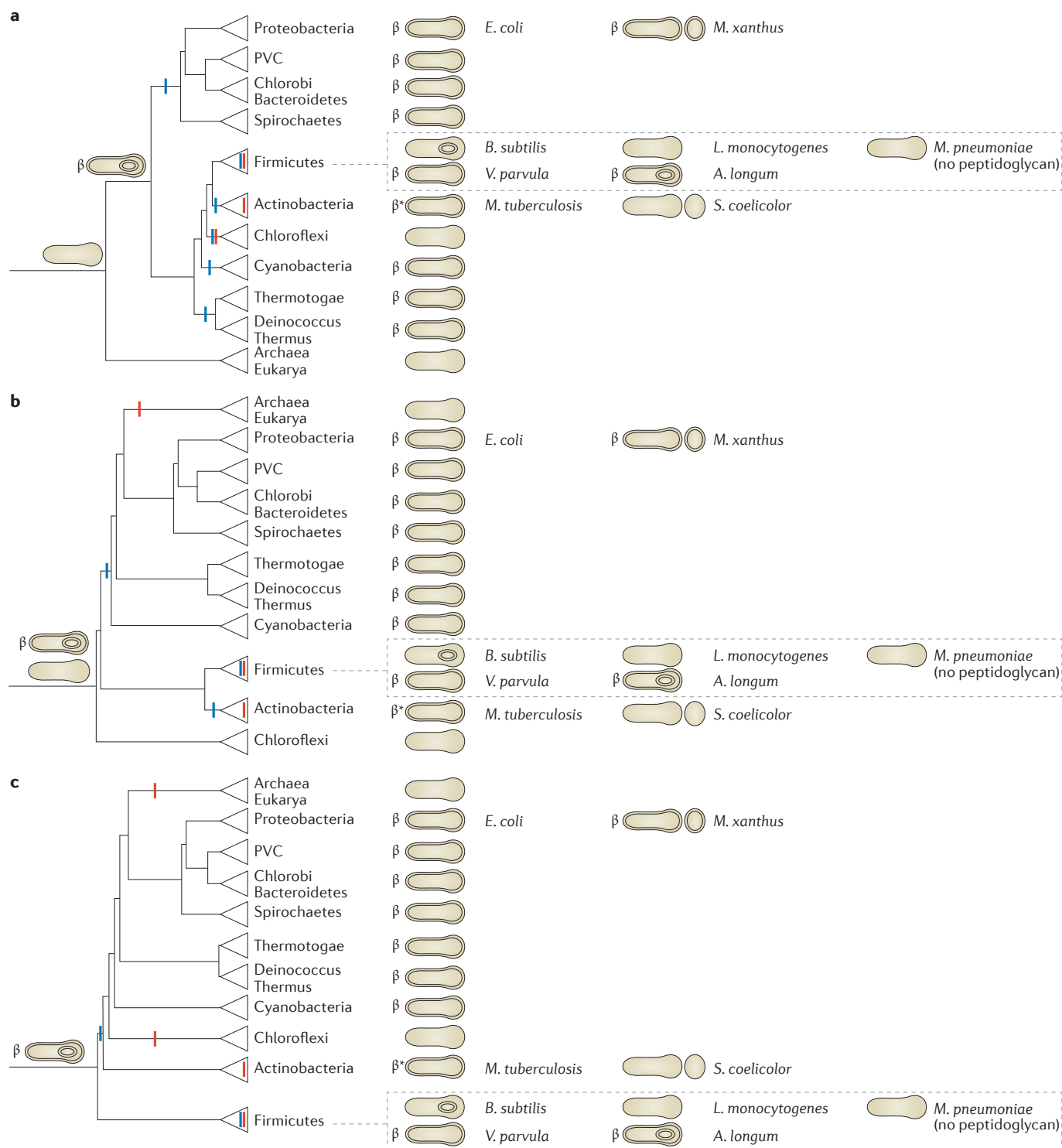


Figure 4 | Rooted phylogenetic trees that represent relationships between bacterial phyla. Three different schematic reproductions are shown of a recent phylogenetic tree of life based on 42 gene markers that are conserved throughout Bacteria and Archaea rooted in three different ways, following leading proposals in the field^{45,50,51,53–55}. Cell envelope structures that are present in members of these phyla are shown on the right. Reported abilities to sporulate are represented by small circles within the cells (for endospores) or next to them (for exospores). The presence of the conserved Omp85 or Omp87 is denoted by the ‘ β ’ symbol and the presence of other conserved outer membrane proteins (OMPs) is denoted by the ‘ β^* ’ symbol. The deduced basic cell plans of ancient

ancestors are depicted on early branches. Losses of sporulation (red) and the outer membrane (blue) are marked, which together with the hypothesized cell plans of ancient ancestors minimize the number of evolutionary events that are required to explain the modern distributions of cell plans and sporulation abilities. In all cases, an endospore-forming diderm preceded all or at most one major branch point. *A. longum*, *Acetonebma longum*; *B. subtilis*, *Bacillus subtilis*; *E. coli*, *Escherichia coli*; *L. monocytogenes*, *Listeria monocytogenes*; *M. pneumoniae*, *Mycoplasma pneumoniae*; *M. tuberculosis*, *Mycobacterium tuberculosis*; *M. xanthus*, *Myxococcus xanthus*; PVC, Planctomycetes–Verrucomicrobia–Chlamydiae; *S. coelicolor*, *Streptomyces coelicolor*; *V. parvula*, *Veillonella parvula*.

considered the implications of this hypothesis in light of the increasingly well-characterized phylogenetic tree of life. Although the root of the tree is still unknown, there are two conclusions that can be made regardless of which root is chosen: the first being that most, if not all, monoderms have not always been monoderm, but rather are the result of a diderm losing its outer membrane; and the second being that sporulation and the diderm cell plan are extremely ancient, preceding all or at most one branch point in the tree of life.

The history of the early Earth remains unclear, but we argue here that one of the earliest common ancestors of all cellular life formed endospores. Interestingly, spores have long been recognized as exquisitely robust life forms that are known to be able to withstand all kinds of environmental insults, such as extremes of temperature and pH and dehydration⁷⁰. One possible explanation for our model is that during the cataclysmic early conditions on Earth, cellular evolution went through a bottleneck in which only robust spores survived; therefore, the last universal common ancestor was a spore. An alternative explanation is panspermia⁷¹: life arrived on Earth as a spore, for example, in one of the frozen comets that some theorize created the oceans. As the Earth became more clement, for efficiency, major branches of the bacterial tree of life lost the ability to sporulate, which resulted in numerous diderm non-sporulating phyla today. Other explanations are also obviously possible.

In any case, our analysis at least challenges the notion that complexity gradually increases through evolutionary time: instead it is a case of high complexity (a diderm endospore-forming cell) existing very early, followed by billions of years of losses with comparatively minor modifications such as the exchange of mycolic acids for LPS in the outer membrane of mycobacteria or the evolution of LPS from diderms that lack LPS. This is in agreement with other recent evidence that complexity increased rapidly in early life on Earth followed by a long period of simplification⁷². However, we acknowledge that it will be difficult, if not impossible, to test these speculations, and that some investigators believe that genes have been swapped so frequently and in such numbers across so many species that trees of life do not make sense⁷³. Nevertheless, we believe our idea that the outer membrane arose through a sporulation event is intriguing, and that if it happened in this way, parsimony argues it must have been a very ancient, perhaps even initiatory, event.

Elitza I. Tocheva is at the Department of Stomatology and the Department of Biochemistry and Molecular Medicine, Université de Montréal, P. O. Box 6128 Station Centre-Ville, Montreal, Québec H3C 3J7, Canada.

David R. Ortega is at the Department of Biology and Biological Engineering, California Institute of Technology, 1200 East California Boulevard, Pasadena, California 91125, USA.

Grant J. Jensen is at the Howard Hughes Medical Institute, Department of Biology and Biological Engineering, California Institute of Technology, 1200 East California Boulevard, Pasadena, California 91125, USA.

Correspondence to G.J.J. and E.I.T.
jensen@caltech.edu; elitza.tocheva@umontreal.ca

doi:10.1038/nrmicro.2016.85
Published online 27 Jun 2016

- Gram, C. Ueber die isolirte färbung der schizomyceten in schnitt-und trockenpräparate. *Fortschritte Med.* **2**, 185–189 (in German) (1884).
- Sutcliffe, I. C. A phylum level perspective on bacterial cell envelope architecture. *Trends Microbiol.* **18**, 464–470 (2010).
- Gupta, R. S. Protein phylogenies and signature sequences: a reappraisal of evolutionary relationships among archaeobacteria, eubacteria, and eukaryotes. *Microbiol. Mol. Biol. Rev.* **62**, 1435–1491 (1998).
- Silhavy, T. J., Kahne, D. & Walker, S. The bacterial cell envelope. *Cold Spring Harb. Perspect. Biol.* **2**, a000414 (2010).
- Martin, W., Baross, J., Kelley, D. & Russell, M. J. Hydrothermal vents and the origin of life. *Nat. Rev. Microbiol.* **6**, 805–814 (2008).
- Gupta, R. S. & Golding, G. B. Evolution of *HSP70* gene and its implications regarding relationships between archaeobacteria, eubacteria, and eukaryotes. *J. Mol. Evol.* **37**, 573–582 (1993).
- Koch, A. L. Were Gram-positive rods the first bacteria? *Trends Microbiol.* **11**, 166–170 (2003).
- Lake, J. A., Herbold, C. W., Rivera, M. C., Servin, J. A. & Skophammer, R. G. Rooting the tree of life using nonubiquitous genes. *Mol. Biol. Evol.* **24**, 130–136 (2007).
- Skophammer, R. G., Servin, J. A., Herbold, C. W. & Lake, J. A. Evidence for a Gram-positive, eubacterial root of the tree of life. *Mol. Biol. Evol.* **24**, 1761–1768 (2007).
- Tocheva, E. I. *et al.* Peptidoglycan remodeling and conversion of an inner membrane into an outer membrane during sporulation. *Cell* **146**, 799–812 (2011).
- Swithers, K. S., Fournier, G. P., Green, A. G., Gogarten, J. P. & Lapierre, P. Reassessment of the lineage fusion hypothesis for the origin of double membrane bacteria. *PLoS ONE* **6**, e23774 (2011).
- Gupta, R. S. Origin of diderm (Gram-negative) bacteria: antibiotic selection pressure rather than endosymbiosis likely led to the evolution of bacterial cells with two membranes. *Antonie Van Leeuwenhoek* **100**, 171–182 (2011).
- Lake, J. A. Evidence for an early prokaryotic endosymbiosis. *Nature* **460**, 967–971 (2009).
- Kay, D. & Warren, S. C. Sporulation in *Bacillus subtilis*. Morphological changes. *Biochem. J.* **109**, 819–824 (1968).
- Tan, I. S. & Ramamurthi, K. S. Spore formation in *Bacillus subtilis*. *Environ. Microbiol. Rep.* **6**, 212–225 (2014).
- Marchandin, H. *et al.* *Negativicoccus succinicivorans* gen. nov., sp. nov., isolated from human clinical samples, emended description of the family *Veillonellaceae* and description of *Negativicoccus* classis nov., *Selenomonadales* ord. nov. and *Acidaminococcaceae* fam. nov. in the bacterial phylum *Firmicutes*. *Int. J. Syst. Evol. Microbiol.* **60**, 1271–1279 (2010).
- Yutin, N. & Galperin, M. Y. A genomic update on clostridial phylogeny: Gram-negative spore formers and other misplaced clostridia. *Environ. Microbiol.* **15**, 2631–2641 (2013).
- Kane, M. D. & Breznak, J. A. *Acetone nema longum* gen. nov. sp. nov., an H₂/CO₂ acetogenic bacterium from the termite, *Pterotermes occidentis*. *Arch. Microbiol.* **156**, 91–98 (1991).
- Campbell, C., Sutcliffe, I. C. & Gupta, R. S. Comparative proteome analysis of *Acidaminococcus intestini* supports a relationship between outer membrane biogenesis in *Negativicoccus* and *Proteobacteria*. *Arch. Microbiol.* **196**, 307–310 (2014).
- Mergenhagen, S. E. Polysaccharide-lipid complexes from *Veillonella parvula*. *J. Bacteriol.* **90**, 1730–1734 (1965).
- Tocheva, E. I. *et al.* Peptidoglycan transformations during *Bacillus subtilis* sporulation. *Mol. Microbiol.* **88**, 673–686 (2013).
- Gan, L. & Jensen, G. J. Electron tomography of cells. *Q. Rev. Biophys.* **45**, 27–56 (2012).
- Errington, J. L-form bacteria, cell walls and the origins of life. *Open Biol.* **3**, 120143 (2013).
- Vollmer, W. Bacterial outer membrane evolution via sporulation? *Nat. Chem. Biol.* **8**, 14–18 (2011).
- Typas, A., Banzhaf, M., Gross, C. A. & Vollmer, W. From the regulation of peptidoglycan synthesis to bacterial growth and morphology. *Nat. Rev. Microbiol.* **10**, 123–136 (2011).
- Vollmer, W. & Bertsche, U. Murein (peptidoglycan) structure, architecture and biosynthesis in *Escherichia coli*. *Biochim. Biophys. Acta* **1778**, 1714–1734 (2008).
- Verwer, R. W., Nanninga, N., Keck, W. & Schwarz, U. Arrangement of glycan chains in the sacculus of *Escherichia coli*. *J. Bacteriol.* **136**, 723–729 (1978).
- Dmitriev, B. A. *et al.* Tertiary structure of bacterial murein: the scaffold model. *J. Bacteriol.* **185**, 3458–3468 (2003).
- Vollmer, W. & Holtje, J. V. The architecture of the murein (peptidoglycan) in Gram-negative bacteria: vertical scaffold or horizontal layer(s)? *J. Bacteriol.* **186**, 5978–5987 (2004).
- Gan, L., Chen, S. & Jensen, G. J. Molecular organization of Gram-negative peptidoglycan. *Proc. Natl Acad. Sci. USA* **105**, 18953–18957 (2008).
- Vollmer, W., Blanot, D. & de Pedro, M. A. Peptidoglycan structure and architecture. *FEMS Microbiol. Rev.* **32**, 149–167 (2008).
- Schleifer, K. H. & Kandler, O. Peptidoglycan types of bacterial cell walls and their taxonomic implications. *Bacteriol. Rev.* **36**, 407–477 (1972).
- McPherson, D. C., Driks, A. & Popham, D. L. Two class A high-molecular-weight penicillin-binding proteins of *Bacillus subtilis* play redundant roles in sporulation. *J. Bacteriol.* **183**, 6046–6053 (2001).
- Sauvage, E., Kerff, F., Terrak, M., Ayala, J. A. & Charlier, P. The penicillin-binding proteins: structure and role in peptidoglycan biosynthesis. *FEMS Microbiol. Rev.* **32**, 234–258 (2008).
- Foster, S. & Popham, D. in *Bacillus subtilis And Its Close Relatives: From Genes to Cells* (eds Sonenshein, A. L., Hoch, J. A. & Losick, R.) 21–41 (American Society for Microbiology, 2002).
- Verwer, R. W. & Nanninga, N. Electron microscopy of isolated cell walls of *Bacillus subtilis* var. *niger*. *Arch. Microbiol.* **109**, 195–197 (1976).
- Dominguez-Escobar, J. *et al.* Processive movement of MreB-associated cell wall biosynthetic complexes in bacteria. *Science* **333**, 225–228 (2011).
- Garner, E. C. *et al.* Coupled, circumferential motions of the cell wall synthesis machinery and MreB filaments in *B. subtilis*. *Science* **333**, 222–225 (2011).
- Hayhurst, E. J., Kailas, L., Hobbs, J. K. & Foster, S. J. Cell wall peptidoglycan architecture in *Bacillus subtilis*. *Proc. Natl Acad. Sci. USA* **105**, 14603–14608 (2008).
- Beeby, M., Gumbart, J. C., Roux, B. & Jensen, G. J. Architecture and assembly of the Gram-positive cell wall. *Mol. Microbiol.* **88**, 664–672 (2013).
- Meyer, P., Gutierrez, J., Pogliano, K. & Dworkin, J. Cell wall synthesis is necessary for membrane dynamics during sporulation of *Bacillus subtilis*. *Mol. Microbiol.* **76**, 956–970 (2010).
- de Pedro, M. A. & Cava, F. Structural constraints and dynamics of bacterial cell wall architecture. *Front. Microbiol.* **6**, 449 (2015).
- Hoiczky, E. & Baumeister, W. Envelope structure of four gliding filamentous cyanobacteria. *J. Bacteriol.* **177**, 2387–2395 (1995).
- Desmarais, S. M., De Pedro, M. A., Cava, F. & Huang, K. C. Peptidoglycan at its peaks: how chromatographic analyses can reveal bacterial cell wall structure and assembly. *Mol. Microbiol.* **89**, 1–13 (2013).

45. Ciccarelli, F. D. *et al.* Toward automatic reconstruction of a highly resolved tree of life. *Science* **311**, 1283–1287 (2006).
46. Raymann, K., Brochier-Armanet, C. & Gribaldo, S. The two-domain tree of life is linked to a new root for the Archaea. *Proc. Natl Acad. Sci. USA* **112**, 6670–6675 (2015).
47. Wu, D. *et al.* A phylogeny-driven genomic encyclopaedia of Bacteria and Archaea. *Nature* **462**, 1056–1060 (2009).
48. Puigbo, P., Wolf, Y. I. & Koonin, E. V. Seeing the Tree of Life behind the phylogenetic forest. *BMC Biol.* **11**, 46 (2013).
49. Lake, J. A., Skophammer, R. G., Herbold, C. W. & Servin, J. A. Genome beginnings: rooting the tree of life. *Philos. Trans. R. Soc. Lond. B Biol. Sci.* **364**, 2177–2185 (2009).
50. Woese, C. R., Kandler, O. & Wheelis, M. L. Towards a natural system of organisms: proposal for the domains Archaea, Bacteria, and Eucarya. *Proc. Natl Acad. Sci. USA* **87**, 4576–4579 (1990).
51. Gogarten, J. P. *et al.* Evolution of the vacuolar H⁺-ATPase: implications for the origin of eukaryotes. *Proc. Natl Acad. Sci. USA* **86**, 6661–6665 (1989).
52. Gouy, R., Baurain, D. & Philippe, H. Rooting the tree of life: the phylogenetic jury is still out. *Philos. Trans. R. Soc. Lond. B Biol. Sci.* **370**, 20140329 (2015).
53. Cavalier-Smith, T. Rooting the tree of life by transition analyses. *Biol. Direct* **1**, 19 (2006).
54. Valas, R. E. & Bourne, P. E. Structural analysis of polarizing indels: an emerging consensus on the root of the tree of life. *Biol. Direct* **4**, 30 (2009).
55. Lake, J. A. & Sinsheimer, J. S. The deep roots of the rings of life. *Genome Biol. Evol.* **5**, 2440–2448 (2013).
56. Nigou, J., Gilleron, M., Brando, T. & Puzo, G. Structural analysis of mycobacterial lipoglycans. *Appl. Biochem. Biotechnol.* **118**, 253–267 (2004).
57. Uenishi, Y., Fujita, Y., Kusunose, N., Yano, I. & Sunagawa, M. Comprehensive analysis of mycolic acid subclass and molecular species composition of *Mycobacterium bovis* BCG Tokyo 172 cell wall skeleton (SMP-105). *J. Microbiol. Methods* **72**, 149–156 (2008).
58. Senaratne, R. H. *et al.* Expression of a gene for a porin-like protein of the OmpA family from *Mycobacterium tuberculosis* H37Rv. *J. Bacteriol.* **180**, 3541–3547 (1998).
59. Niederweis, M., Danilchanka, O., Huff, J., Hoffmann, C. & Engelhardt, H. Mycobacterial outer membranes: in search of proteins. *Trends Microbiol.* **18**, 109–116 (2010).
60. Hillmann, D., Eschenbacher, I., Thiel, A. & Niederweis, M. Expression of the major porin gene *mspA* is regulated in *Mycobacterium smegmatis*. *J. Bacteriol.* **189**, 958–967 (2007).
61. Song, H., Sandie, R., Wang, Y., Andrade-Navarro, M. A. & Niederweis, M. Identification of outer membrane proteins of *Mycobacterium tuberculosis*. *Tuberculosis* **88**, 526–544 (2008).
62. Remmert, M., Biegert, A., Linke, D., Lupas, A. N. & Soding, J. Evolution of outer membrane β -barrels from an ancestral $\beta\beta$ hairpin. *Mol. Biol. Evol.* **27**, 1348–1358 (2010).
63. Cavalier-Smith, T. The neomuran revolution and phagotrophic origin of eukaryotes and cilia in the light of intracellular coevolution and a revised tree of life. *Cold Spring Harb. Perspect. Biol.* **6**, a016006 (2014).
64. Sutcliffe, I. C. Cell envelope architecture in the *Chloroflexi*: a shifting frontline in a phylogenetic turf war. *Environ. Microbiol.* **13**, 279–282 (2011).
65. Houben, E. N., Korotkov, K. V. & Bitter, W. Take five — Type VII secretion systems of *Mycobacteria*. *Biochim. Biophys. Acta* **1843**, 1707–1716 (2014).
66. Lombard, J., Lopez-Garcia, P. & Moreira, D. The early evolution of lipid membranes and the three domains of life. *Nat. Rev. Microbiol.* **10**, 507–515 (2012).
67. Brown, C. T. *et al.* Unusual biology across a group comprising more than 15% of domain Bacteria. *Nature* **523**, 208–211 (2015).
68. Rinke, C. *et al.* Insights into the phylogeny and coding potential of microbial dark matter. *Nature* **499**, 431–437 (2013).
69. Hug, L. A. *et al.* Critical biogeochemical functions in the subsurface are associated with bacteria from new phyla and little studied lineages. *Environ. Microbiol.* **18**, 159–173 (2016).
70. Setlow, P. I will survive: DNA protection in bacterial spores. *Trends Microbiol.* **15**, 172–180 (2007).
71. Nicholson, W. L. Ancient microns: interplanetary transport of microbes by cosmic impacts. *Trends Microbiol.* **17**, 243–250 (2009).
72. Wolf, Y. I. & Koonin, E. V. Genome reduction as the dominant mode of evolution. *Bioessays* **35**, 829–837 (2013).
73. Doolittle, W. F. Phylogenetic classification and the universal tree. *Science* **284**, 2124–2129 (1999).

Acknowledgements

Cryotomography in the Jensen laboratory is supported, in part, by the US National Institutes of Health (including grant RO1 GM101425), the Howard Hughes Medical Institute (HHMI) and the Beckman Institute at California Institute of Technology (Caltech), Pasadena, USA. Further support for this publication came from the John Templeton Foundation. The opinions expressed in this publication are those of the authors and do not necessarily reflect the views of the John Templeton Foundation. The authors thank C. Cleland, T. Nordheim, L. Brengman, K. Willford and J. Eisen for helpful discussions about the early Earth and possible roots of the tree of life.

Competing interests statement

The authors declare no competing interests.